



Brother P-touch labels have been subjected to a series of rigorous tests which prove that even when they're exposed to extreme conditions our labels have been designed to last.



Laminated

Laminated – our unique laminated tape technology ensures that a layer of super-clear polyethylene laminate protects your text.



Temperature Resistant

Temperature Resistant – P-touch labels can withstand extreme temperatures, from -80°C to 150°C.



Strong Adhesion

Strong Adhesion – specially developed adhesive means P-touch labels will stay firmly affixed to a wide range of surfaces.



Abrasion Resistant

Abrasion Resistant – In the P-touch abrasion test using a 1kg sanding device, lettering remained completely intact, only the protective layer was slightly scratched.



Chemical Resistant

Chemical Resistant – after being submerged for 2 hours in a variety of chemical substances, no change in appearance or structure of P-touch labels occurred and the labels remained affixed.



Water Resistant

Water Resistant – after submersion in water over a long period, the tape structure and adhesive strength of P-touch labels remained unchanged.



Fade Resistant

Fade Resistant – after a year in a simulated sunny climate P-touch labels showed very little change visible to the naked eye.



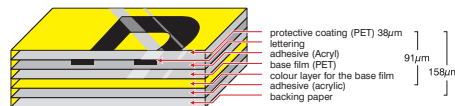
Easy Peel

Easy Peel – enables convenient removal of the tape backing before applying the label.

Why do Brother P-touch labels last longer ?

Unlike ordinary labels, Brother's patented laminated tape technology ensures that a layer of super clear polyethylene laminate protects your text. Our laminated tapes consist of six layers of materials, resulting in a thin, extremely strong label.

Characters formed with thermal transfer ink are actually printed on the underside of the laminate and sandwiched between layers of PET (polyester film). This lets you create characters that are virtually indestructible on labels that stand the test of time.



Brother Laminated Tape Construction

Tape Widths



Contact:

At your side.
brother.

Brother International (Aust) Pty Ltd

Web-site: www.brother.com.au Technical Help Web-site: <http://solutions.brother.com>
NSW/ACT 7 Khartoum Rd. North Ryde NSW 2113 Phone: (02) 9887 4344 Fax: (02) 9870 7234
VIC 1/733 Whitehorse Rd. Mont Albert VIC 3127 Phone: (03) 9899 4844 Fax: (03) 9899 4833
QLD/NT 245 Riverside Drive. West End QLD 4101 Phone: (07) 3255 1211 Fax: (07) 3255 1911
SA/TAS Unit 4, 13 King William Rd. Unley SA 5061 Phone: (08) 8272 1300 Fax: (08) 8272 1199
WA 117 Great Eastern Highway. Belmont WA 6104 Phone: (08) 9478 1955 Fax: (08) 9277 2177

All specifications subject to change without notice

P-touch
1880

Electronic labeller



Always at your side

Technical Information

Hardware

Housing Dimensions	167mm(W) x 215mm(D) x 57 mm(H)
Housing Weight	570g (without batteries and tape cassette)
Housing Design	Desktop
Housing Colour	Metallic Blue
Keyboard	QWERTY
Number of Keys	60 keys
Cutter	Manual
Power	AA sized Alkaline Batteries x 6pcs or Optional AC Adaptor (AD-5000)
LCD	15chr. x 1 line
Included Items	12mm x 5m Black on White Laminated Tape - TZ-231 User Guide
Tape Type	TZ-tape
Tape Size	3.5 / 6 / 9 / 12 / 18mm
Print Head	180 dpi
Print Speed	10mm / sec.

Firmware

Built in Fonts	Helsinki, Bohemia
Characters	280
Character Sizes	4 (small, medium, large and max)
Character Widths	3 (normal / x 2 / x1/2)
Symbols	71
Max. Print Height	9mm
Number of lines printable	Max.2 lines
Text Buffer	80 characters
Memory	Yes (Print, Save, Open) 400 characters memory
Type Styles	Normal / Bold / Outline / Shadow / Italic Italic Bold / Italic Outline / Italic Shadow / Vertical
Framing & Fill Pattern	10 kinds: (Off / Underline / Round / Callout / Wooden / Candy / Banner / Vine / Hand / Flower)
Repeat Printing	Yes (1-9)
Mirror Printing	Yes
Numbering	Yes (0 - 9)
Templates	Length Auto Format - Off / VHS Spine / Mini DV Spine / Audio Tape / CD Case Spine / File Tab / Divider Tab)
Battery Weak Indication	Yes
Tape Margin Settings	Yes (full / half / narrow / chain print)
Auto Power Off	Yes
Print Image (Preview)	Yes

P-touch 1880

Achieve a more organised and efficient workplace with the PT-1880 P-touch electronic labeler. The PT-1880 creates durable, laminated labels, so you can be rest assured your organisation system will be reliable even in the most toughest conditions.

The handy machine size enables it to be used either as a desktop or as a handheld labeler and with easy to select buttons, you can change fonts in a breeze.



Key Features

- Tape and user guide supplied
- 2 built-in fonts
- Prints up to 2 lines
- 9 type styles
- Prints labels from 3.5mm to 18mm wide
- Built-in label templates

Wide Range of Tapes

TZ tapes are available in a large range of colours and widths. Standard tape length is 8m providing approximately 100 labels (based on 10 characters and standard label length of 8cm). For full tape line up see TZ tape catalogue.



Within the TZ tape range we also offer special tapes, including:

Strong Adhesive Tape - To give improved adhesion for those even more demanding applications and environments.

Tamper Evident Tape - Designed to leave a checker-board pattern as an indicator that the tape has been removed.

Iron-On Fabric Tape - Produces washable cloth labels ideal for labelling uniforms, work wear, bedding and table cloths.

Flexi ID Tape - Ideal for cylindrical surfaces and flagging cables.

